

# Depression as a Predictor of Weight Regain Among Successful Weight Losers in the Diabetes Prevention Program

DAVID W. PRICE, MD<sup>1,2</sup>  
YONG MA, PHD<sup>3</sup>  
RICHARD R. RUBIN, PHD<sup>4,5</sup>  
LEIGH PERREAULT, MD<sup>6</sup>  
GEORGE A. BRAY, MD<sup>7</sup>  
DAVID MARRERO, PHD<sup>8</sup>

WILLIAM C. KNOWLER, MD, DRPH<sup>9</sup>  
ELIZABETH BARRETT-CONNOR, MD<sup>10</sup>  
D. YVETTE LACOURSIERE, MD<sup>11</sup>  
FOR THE DIABETES PREVENTION PROGRAM  
RESEARCH GROUP\*

**OBJECTIVE**—To determine whether depression symptoms or antidepressant medication use predicts weight regain in overweight individuals with impaired glucose tolerance (IGT) who are successful with initial weight loss.

**RESEARCH DESIGN AND METHODS**—A total of 1,442 participants who successfully lost at least 3% of their baseline body weight after 12 months of participation in the randomized controlled Diabetes Prevention Program (DPP) continued in their assigned treatment group (metformin, intensive lifestyle, or placebo) and were followed into the Diabetes Prevention Program Outcome Study (DPPOS). Weight regain was defined as a return to baseline DPP body weight. Participant weight and antidepressant medication use were assessed every 6 months. Depression symptoms (Beck Depression Inventory [BDI] score  $\geq 11$ ) were assessed every 12 months.

**RESULTS**—Only 2.7% of the overall cohort had moderate to severe depression symptoms at baseline; most of the participants with BDI score  $\geq 11$  had only mild symptoms during the period of observation. In unadjusted analyses, both depression symptoms (hazard ratio 1.31 [95% CI 1.03–1.67],  $P = 0.03$ ) and antidepressant medication use at either the previous visit (1.72 [1.37–2.15],  $P < 0.0001$ ) or cumulatively as percent of visits (1.005 [1.002–1.008],  $P = 0.0003$ ) were predictors of subsequent weight regain. After adjustment for multiple covariates, antidepressant use remained a significant predictor of weight regain ( $P < 0.0001$  for the previous study visit;  $P = 0.0005$  for the cumulative measure), while depression symptoms did not.

**CONCLUSIONS**—In individuals with IGT who do not have severe depression and who initially lose weight, antidepressant use may increase the risk of weight regain.

*Diabetes Care* 36:216–221, 2013

From the <sup>1</sup>Institute for Health Research, Kaiser Permanente Colorado, Denver, Colorado; the <sup>2</sup>Department of Family Medicine, University of Colorado Anschutz Medical Campus, Aurora, Colorado; the <sup>3</sup>Biostatistics Center, George Washington University, Rockville, Maryland; the <sup>4</sup>Department of Medicine, Johns Hopkins University School of Medicine, Baltimore, Maryland; the <sup>5</sup>Department of Pediatrics, Johns Hopkins University School of Medicine, Baltimore, Maryland; the <sup>6</sup>Department of Endocrinology, University of Colorado University of Colorado Anschutz Medical Campus, Aurora, Colorado; <sup>7</sup>Pennington Biomedical Research Center, Baton Rouge, Louisiana; the <sup>8</sup>Department of Medicine, Indiana University School of Medicine, Indianapolis, Indiana; the <sup>9</sup>National Institute of Diabetes and Digestive and Kidney Diseases, Phoenix, Arizona; the <sup>10</sup>Department of Family and Preventative Medicine, University of California, San Diego, La Jolla, California; and the <sup>11</sup>Department of Reproductive Medicine, University of California, San Diego, La Jolla, California.

Corresponding author: David W. Price, dppmail@biostat.bsc.gwu.edu, david.price@ucdenver.edu, or david.price@kp.org.

Received 10 February 2012 and accepted 24 July 2012.

DOI: 10.2337/dc12-0293. Clinical trial reg. nos. NCT0004992 and NCT00038727, clinicaltrials.gov.

This article contains Supplementary Data online at <http://care.diabetesjournals.org/lookup/suppl/doi:10.2337/dc12-0293/-DC1>.

\*A full list of investigators can be found in the Supplementary Data online.

The opinions expressed are those of the investigators and do not necessarily reflect the views of the funding agencies.

© 2013 by the American Diabetes Association. Readers may use this article as long as the work is properly cited, the use is educational and not for profit, and the work is not altered. See <http://creativecommons.org/licenses/by-nc-nd/3.0/> for details.

Depression is common in obese individuals (1–4) and is 50–100% more prevalent in those with diabetes than in the general population (3,4). Depression symptoms are associated with an increased risk of type 2 diabetes (5,6), and antidepressant medication use may also be associated with the development of diabetes in high-risk individuals (7–9). Both depression symptoms and antidepressant medications have been associated with overweight/obesity in individuals with or at increased risk of type 2 diabetes (7,10).

Depression is known to impair adherence to treatment recommendations in several chronic illnesses, including diabetes (11,12). This raises the possibility that problems with motivation and concentration, two cardinal symptoms of depression, could interfere with adherence to weight-loss efforts such as those shown to reduce the risk of developing type 2 diabetes in the Diabetes Prevention Program (DPP) (13) and the Finnish Diabetes Prevention Study (14). An analysis of a subset of DPP participants showed that higher baseline levels of depression symptoms were associated with lower levels of baseline physical activity (15). Another analysis from the original DPP cohort suggested that baseline depression symptoms did not adversely impact the chances of successful initial weight loss among participants randomized to the intensive lifestyle arm (16). It is not known whether depression symptoms at baseline affected weight in the metformin or placebo arms of the DPP clinical trial.

Weight regain is common after successful weight loss. To our knowledge, no studies have examined mood or antidepressant use as predictors of weight regain in individuals with prediabetes or diabetes who were previously successful in losing weight. In this study, we explored the association between weight gain and depression symptoms or antidepressant use in participants who successfully lost at least 3% of their baseline body weight after 1 year of the DPP. We examined the associations between depression symptoms or antidepressant use and weight

regain 6 months subsequently. We also examined the associations between cumulative depression symptoms or antidepressant use over the course of the DPPOS and weight regain. Our hypotheses were that depression symptoms would predict weight regain and that antidepressant use would predict weight regain. These associations would suggest the importance of regular monitoring for depression in successful weight loss participants in order to intervene early to decrease the risk of weight regain and for close follow-up for weight regain in individuals taking antidepressants.

## RESEARCH DESIGN AND METHODS

The DPP was a randomized controlled clinical trial designed to compare the effects of lifestyle modification (achievement of  $\geq 150$  min of exercise per week and 7% weight loss) or metformin on delaying the onset of type 2 diabetes in overweight or obese adults who had impaired glucose tolerance and impaired fasting glucose (17,18). Participants with major psychiatric disorders and those taking greater than moderate doses of antidepressants were excluded (19). The first phase of the DPP study concluded after a mean 2.8 years of follow-up, with the finding that both lifestyle and metformin treatment resulted in significantly reduced risk of progression to type 2 diabetes compared with placebo (13). The study then continued in 2001 as the Diabetes Prevention Program Outcomes Study (DPPOS), designed to assess the effects of lifestyle or metformin on preventing long term macro- and microvascular complications of diabetes. In the DPPOS, participants continued in their assigned DPP treatment group: metformin, intensive lifestyle modification, or placebo. While weight loss per se was not a goal for participants in the metformin or placebo groups, all three treatment groups received exercise and weight loss advice in DPPOS and were eligible to attend quarterly lifestyle education sessions. Lifestyle intervention participants were also offered additional semiannual weight loss-specific campaigns. While the mechanism of weight loss in the metformin group may differ than other groups, all three treatment groups were included in this analysis because the objective was to see what the presence of depression symptoms did to the risk of weight regain among those who successfully lost weight regardless of the intervention or mechanism.

Data were collected longitudinally throughout the DPP/DPPOS. Participants' weight was collected every 6 months during both DPP and DPPOS through October 2008. As the weight regain event happened throughout the course of the study, the weight regain outcome was defined as a time-to-event variable at the subject level. Concurrent medication data were collected every 6 months in DPP/DPPOS. Nutrition data were collected at DPP baseline and year 1 and DPPOS years 1, 2, and year 5. Psychological and behavioral questionnaires were administered annually in both DPP and DPPOS (17,18). Analyses in this paper are limited to successful weight losers, defined as participants randomized to the lifestyle, metformin, or placebo arms who achieved at least the median or greater weight loss (3% of baseline body weight) at the 12-month visit after randomization. The primary outcome of this analysis was weight regain (i.e., failure to maintain weight loss), defined as time to the first measured occurrence of a regain to the DPP baseline weight. We took a participant-centric perspective in selecting return to baseline weight, rather than a set kilogram definition, of weight regain, as we believe the former approach more closely mirrors concerns regarding how those who attempt weight loss and clinicians gauge the success of their efforts in real-world settings.

Data collection in this analysis, spanning the DPP and DPPOS, continued for a mean of 10 years. Participant data were censored at the point of weight regain. Cox proportional hazard models were used to examine the association between the key predictors (depression symptoms and antidepressant use) and the main outcome of weight regain. We hypothesized that both variables would predict weight regain. "Depression symptoms" was defined categorically as a Beck Depression Inventory (BDI) score  $\geq 11$ . The BDI is a 21-item questionnaire, widely used clinically and in research, that has been shown to reliably detect mild, moderate, and severe levels of depression; the cut point of  $\geq 11$  indicates at least mild depression symptoms (19). Presence or absence of antidepressant use (selective serotonin uptake inhibitors, tricyclic antidepressants, serotonin/norepinephrine reuptake inhibitors, and dopamine agonists) was derived from concurrent medication data.

Because depression symptoms and antidepressant use were measured repeatedly

throughout the study, we used time-dependent covariate analyses to model the relationship between depression and weight regain. Predictors in the models included depression symptoms 6 months prior to assessment of weight regain, percent of time having depression symptoms at previous DPP/DPPOS visits, taking an antidepressant 6 months earlier, and percent of time taking an antidepressant at previous DPP/DPPOS visits. For variables measured only at annual visits, such as depression scores, missing values at the semiannual visits were imputed using the previous annual visit data. Other non-structural missing values were very sporadic and imputed using the last-value-carried-forward approach. Again using time-to-event analyses, we then sequentially assessed for the effect of several covariates potentially related to weight gain, including 1) baseline treatment group (lifestyle, metformin, and placebo); 2) age, sex, and ethnicity; 3) marital status, income level, and education level; 4) BMI at randomization and percent weight loss at the 12-month DPP visit; 5) baseline activity and nutrient intake at DPP entry and at entry into the analysis and time-dependent leisure activity; 6) medical comorbidity (assessed by number of chronic medications at the visit before weight regain), total number of serious adverse events before weight regain, incident diagnosis of diabetes, and initiation of diabetes medications other than metformin during follow-up; 7) diabetes status plus antiglycemic medication use; 8) average leisure activity throughout the study period; and 9) DPP baseline participant self-rating of general health using the General and Physical Functioning questions of the SF-36 and mild or greater levels of anxiety. (Serious adverse medical events include conditions resulting in hospitalization for  $>24$  hours, prolongation of a current hospitalization, permanent or severe disability, death, or congenital abnormality in pregnancy; are life threatening; or are involved in an accidental or intentional medication overdose.) Anxiety was assessed with the Beck Anxiety Inventory, a 21-item self-administered questionnaire shown to reliably detect mild levels of anxiety at a score  $\geq 8$  (20). Participants were not asked the indication (depression vs. anxiety) for antidepressant use at DPPOS visits; however, only 16% of participants had mild or greater levels of anxiety, and depression and anxiety symptoms are often comorbid (21). To examine the possibility that the association between depression

symptoms or antidepressant use and weight regain varied by the degree of initial weight loss, we examined the interaction between percentage of initial weight loss (3–7%, or approximately 7–15 pounds, versus  $\geq 7\%$ ) and the depression variables. The SAS system was used for all analyses (version 9.3; SAS Institute, Cary, NC).

**RESULTS**—Baseline characteristics of DPP participants who lost  $\geq 3\%$  of their baseline body weight as of the 12-month DPP visit and those who did not are shown in Table 1. Of the original 3,234 DPP enrollees, 1,452 (44.9%) had lost at least 3% of their baseline body weight at the time of the 12-month DPP visit, which was the point of maximum weight loss for

most participants. Seventy-one percent of DPP lifestyle participants achieved  $\geq 3\%$  weight loss compared with 42% of participants randomized to metformin and 21% of participants randomized to placebo ( $P < 0.001$ ). Participants who lost  $\geq 3\%$  weight were older at DPP baseline (50.9 compared with 49.1 years of age,  $P < 0.0001$ ) and had a lower baseline BMI (32.4 vs. 33.2 kg/m<sup>2</sup>,  $P = 0.0028$ ). Non-Hispanic white participants were somewhat more successful losing 3% of baseline weight compared with participants in other ethnic groups ( $P < 0.01$ ), and married participants were slightly more successful compared with those who were not married ( $P < 0.05$ ). Baseline antidepressant use, depression symptoms, anxiety symptoms, caloric intake,

and leisure activity did not differ between participants losing weight and those not losing weight. Ten participants had no subsequent visits and were excluded from further analysis. Therefore, 1,442 participants are included in this analysis: 762 (52.8%) of successful weight losers were lifestyle participants, 452 (31.4%) were metformin participants, and 228 (15.8%) participated in the placebo arm. The median weight loss in the three groups was 8.5% (25th–75th percentile 6.1–12.0), 6.0% (4.3–8.9), and 5.7% (4.1–8.1), respectively. Among the 1,442 study participants who lost  $\geq 3\%$  of their baseline body weight as of the 12-month DPP visit, 826 (57%) regained their baseline weight, which occurred, on average, after 5.1 years of follow-up. Weight regain occurred in 124 (55.6%) lifestyle participants, 245 (54.2%) metformin participants, and 157 (68.9%) placebo participants. The crude incidence rate of weight regain to baseline in the three groups was 10.3 per 100 person-years for lifestyle, 10.3 for metformin, and 17.9 for the placebo group ( $P < 0.0001$ ). As shown in Fig. 1, the difference between placebo and the other two groups was significant ( $P < 0.0001$ ) beginning at the 6-month visit after the start of this analysis. Treatment group and weight loss at year one were independently associated with weight regain (data not shown).

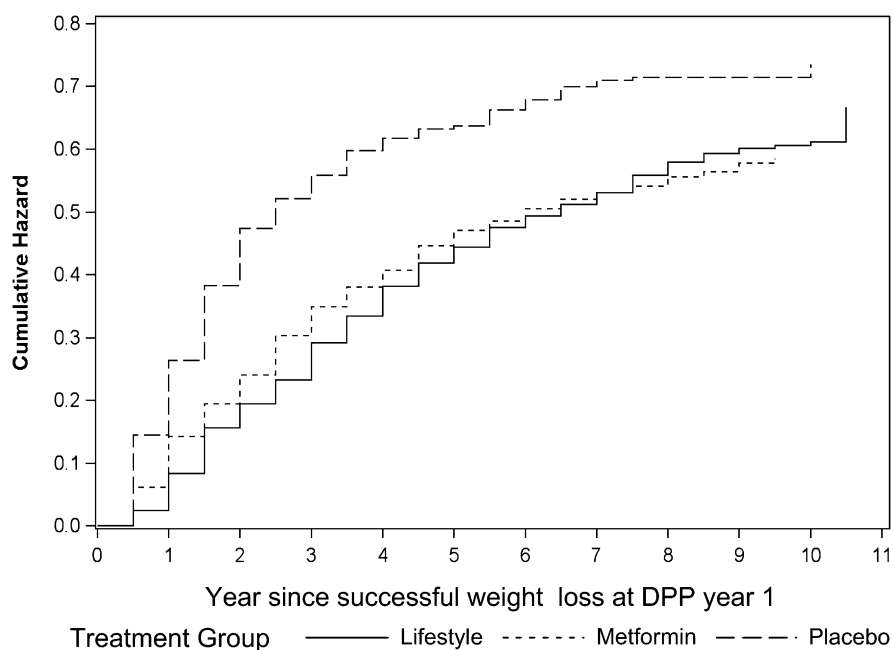
Overall, 25.6% of the cohort in this analysis experienced elevated depression symptoms and 23.4% reported antidepressant use at least once during the assessment period. The majority of depressed participants had mild symptoms (BDI 11–15); only 36% of participants with depression symptoms (2.7% of the overall cohort) had more severe depression symptoms (BDI score of  $\geq 16$ ), limiting our power to conduct subset analyses on the most severely depressed (likely major depressive disorder) participants. The percentage of participants with categorically defined depression symptoms at a given study assessment point fluctuated throughout the study, while the percentage of participants taking antidepressant medication at a study assessment point trended upward toward 11–12% (Fig. 2)—a finding consistent with secular prevalence and trends (22). Less than 7.4% of participants simultaneously reported both depression symptoms and antidepressant use at any visit during the assessment period.

In unadjusted models, both depression symptoms (hazard ratio 1.31 [95%

Table 1—Comparison of participants who lost  $\geq 3\%$  baseline weight vs. those who did not

Characteristics at DPP baseline	Weight loss at DPP year 1 visit	
	<3% (n = 1,782)	$\geq 3\%$ (n = 1,452)
Treatment groups*		
Intensive lifestyle	312 (28.9)	767 (71.1)
Metformin	618 (57.6)	455 (42.4)
Placebo	852 (78.7)	230 (21.3)
Age at randomization (years)*	49.1 (42.5–56.7)	50.9 (43.8–59.0)
Sex		
Female	1,219 (55.6)	972 (44.4)
Male	563 (54.0)	480 (46.0)
Race/ethnicity&		
Caucasian	930 (52.6)	838 (47.4)
African American	392 (60.8)	253 (39.2)
Hispanic	282 (55.5)	226 (44.5)
American Indian	98 (57.3)	73 (42.7)
Asian	80 (56.3)	62 (43.7)
Married#		
Yes	1,138 (53.6)	986 (46.4)
No	644 (58.0)	466 (42.0)
Education (years)		
$\leq 12$	468 (56.1)	366 (43.9)
13–16	833 (53.5)	723 (46.5)
$\geq 17$	481 (57.0)	363 (43.0)
BMI (kg/m <sup>2</sup> )&	33.2 (29.1–37.9)	32.4 (28.8–36.7)
Leisure activity (MET h/week)	10.0 (4.1–20.5)	9.6 (3.7–20.7)
Calorie intake (kcal)	1,904 (1,470–2,576)	1,886 (1,436–2,522)
Depression symptoms (BDI $\geq 11$ )		
Yes	186 (56.7)	142 (43.3)
No	1,563 (54.7)	1,296 (45.3)
Anxiety symptom (BAI $\geq 8$ )		
Yes	286 (55.2)	232 (44.8)
No	1,463 (54.8)	1,206 (45.2)
Antidepressant use		
Yes	92 (56.8)	70 (43.2)
No	1,690 (55.0)	1,382 (45.0)

Data are n (%) or median (interquartile range). BAI, Beck Anxiety Inventory. \* $P < 0.0001$ . & $P < 0.01$ . # $P < 0.05$ .



**Figure 1**—Cumulative incidence of weight regain by DPP treatment group.

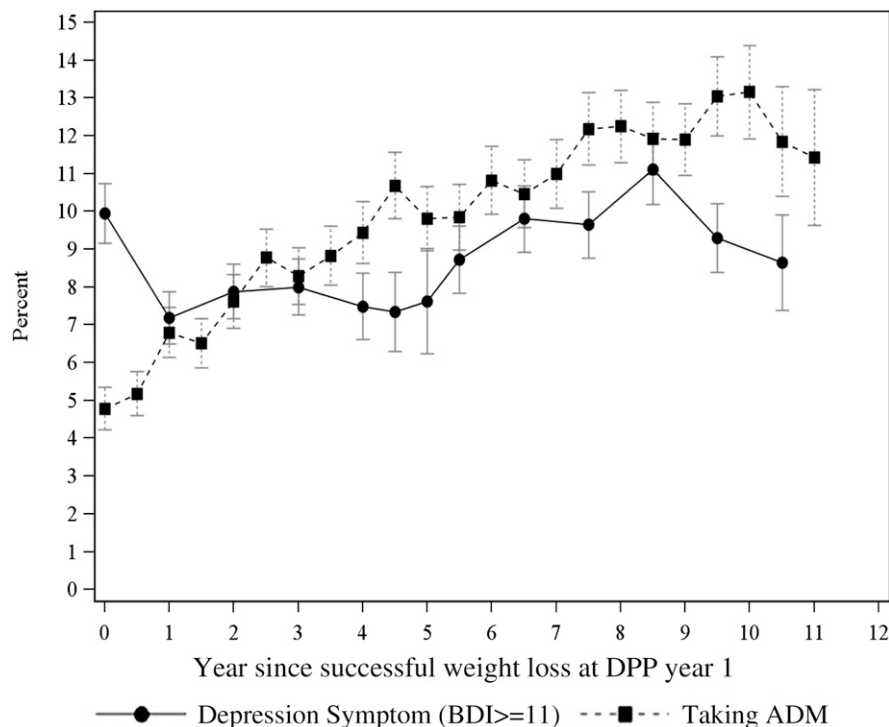
CI 1.03–1.67],  $P = 0.03$ ) and antidepressant use noted at the study visit 6 months previously (1.72 [1.37–2.15],  $P < 0.0001$ ) were predictors of weight regain. Cumulative antidepressant use calculated as a percentage of all prior visits was also

noted to predict weight regain (1.005 [1.002–1.008],  $P = 0.0003$ ), while cumulative depression symptoms calculated as a percentage of all prior study visits was not predictive (1.003 [1.000–1.006],  $P = 0.09$ ). There were no

significant interactions between depression symptoms and treatment group. After adjustment for all covariates, depression symptoms at the previous visit no longer predicted weight regain; however, use of antidepressant medication at either the previous visit (1.735 [1.338–2.250],  $P < 0.0001$ ) or any prior study visits as a percent (1.006 [1.002–1.009],  $P = 0.0005$ ) remained a significant predictor for weight regain. The association of antidepressant use and subsequent weight regain was also noted in the subgroup of selective serotonin reuptake inhibitor (SSRI) participants (1.92 [1.43–2.58],  $P < 0.0001$  for the previous visit; 1.006 [1.003–1.01] for any prior study visit, adjusted for the same covariates as in the antidepressant model). In fact, the antidepressant effect is mostly driven by the SSRI users. To determine whether the association between depression symptoms or antidepressant use and weight regain might be different in moderate and substantial initial weight losers, we performed a sensitivity analysis to look for a significant interaction between the weight loss categorical variable (3–7 vs.  $\geq 7\%$  weight loss) and the four depression measures. Because no significant interaction was found, we did not conduct further subgroup analyses.

**CONCLUSIONS**—Fifty-seven percent of successful weight losers ( $\geq 3\%$  from baseline after 1 year of the DPP) regained their initially lost weight after an average of 5.1 years; 43% of successful weight losers were able to maintain some amount of weight loss. These findings are not surprising, given the results of other studies that substantiate the difficulties of sustaining initial weight loss over the long term (23). Participants in the active DPP treatment arms (lifestyle and metformin) were somewhat more successful in maintaining weight loss than placebo group participants (with differences becoming evident early in the follow-up period), yet many active group participants also regained weight. The weight regain similarities between the metformin and lifestyle groups in this analysis parallel those seen in the entire DPPOS cohort and in part reflect the fact that some lifestyle components were offered to metformin group participants, and the lifestyle group intervention became somewhat less intense after the completion of the initial DPP study (24).

In unadjusted models, both depression symptoms and antidepressant use



**Figure 2**—Depression symptoms and antidepressant medication use over time among participants who achieved at least 3% weight loss.

at either the previous DPP visit or their cumulative measures were associated with weight regain. After adjustment for multiple factors potentially related to weight gain, antidepressant use, but not depression symptoms, remained associated with a risk of weight regain in these participants. The risk of weight regain was 72% higher for participants using antidepressants at the visit 6 months prior compared with non-antidepressant users. This association remained when the analysis was restricted to SSRI antidepressant users.

SSRIs were the most frequently used (78%) antidepressants among DPP participants (25). Even though SSRIs are traditionally thought to be associated with less weight gain than are many older antidepressants, recent examinations (26) have suggested the tendency for some SSRI users to gain weight over time—a finding consistent with other DPP analyses (7). It is therefore possible that the weight regain seen in our participants is due to antidepressant side effects. The small number of participants using non-SSRI antidepressants precluded a comparison of risk of weight regain by antidepressant class.

There are several possible explanations for the failure of depression symptoms in predicting weight gain in our cohort. While weight gain is a feature of some forms of depression, it is not as prevalent as weight loss (27). Other investigators have found that the prevalence of obesity is related to depression severity (1,2). Individuals with more severe depression were excluded from DPP—only 2.7% had moderate or greater levels of depression at the time of initial enrollment (18)—and most of the participants with BDI score  $\geq 11$  during the period of observation had only mild symptoms. Therefore, it is possible that more severe, but not milder, depression symptoms would be related to weight regain, but we did not have enough power to detect this association. This would not discount the association between antidepressant medication use and weight regain, however.

Depression symptoms were assessed annually during our period of observation, while antidepressant medication use was assessed every 6 months. Thus, it is possible that, similar to the initial DPP cohort, depression symptoms in our participants were of short duration and may have resolved by the time of follow-up assessment (25). The frequent attention DPP participants received throughout the study may have helped lead to symptom resolution in some participants with

milder depression symptoms. It is also possible that antidepressants were effective in treating the mild depression symptoms in our population, leading to symptom resolution while antidepressant use continued. While the DPP and DPPOS were not designed to ascertain this, a recent analysis (26) noting marginal differences between antidepressants and placebo for participants with mild depression symptoms lessens this possibility. We therefore cannot differentiate between spontaneous, antidepressant-aided, and psychosocial support-assisted resolution of depression symptoms in our cohort. All of these possibilities would lead to a failure to detect an association between depression symptoms as a predictor of weight regain.

Our analysis was also limited by the small number of participants (7.4%) reporting both depression symptoms and antidepressant use. The lower-than-expected prevalence of depression in our sample may be the result of DPP study selection criteria (individuals taking higher than the normal starting antidepressant dose were excluded) and recruitment bias (depressed individuals may have been less likely to volunteer for a long intensive study). The vast majority of participants in our cohort had mild depression symptoms that did not likely meet the threshold for major depressive disorder, which may explain why many participants with depression symptoms did not report taking antidepressants. We therefore could not test for differences between participants with both depression symptoms and antidepressant use compared with participants with only depression symptoms or only antidepressant use. Furthermore, the mild nature of depression symptoms in our cohort may limit the generalizability of our findings to other populations of individuals at risk for diabetes with more severe depression.

In our study of successful initial weight losers, after adjustment for multiple relevant covariates, antidepressant use at the previous (6 month) DPPOS visit was predictive of weight regain on follow-up. This suggests that overweight individuals with impaired glucose intolerance who successfully lose weight and who are recent antidepressant medication users may be at higher risk for regaining weight than non-antidepressant users with impaired glucose tolerance. Maintaining initially successful weight loss strategies over time can be difficult (23). These at-risk individuals may benefit from ongoing support via regularly structured coaching

and reinforcement to help them maintain their successful weight loss strategies and refine them for new or unexpected challenges to maintaining behavior change. Early detection of weight regain could lead to intensification of weight loss strategies or the addition of new strategies to minimize regained weight. Future studies could design and elucidate practical, effective strategies for real-world settings to help these at-risk individuals maintain successful weight loss.

**Acknowledgments**—During the DPPOS, the National Institute of Diabetes and Digestive and Kidney Diseases (NIDDK) of the National Institutes of Health provided funding to the clinical centers and the coordinating center for the design and conduct of the study and collection, management, analysis, and interpretation of the data. The Southwestern American Indian Centers were supported directly by the NIDDK, including its Intramural Research Program, and the Indian Health Service. The General Clinical Research Center Program, National Center for Research Resources, supported data collection at many of the clinical centers. Funding was also provided by the National Institute of Child Health and Human Development, the National Institute on Aging, the National Eye Institute, the National Heart, Lung and Blood Institute, the Office of Research on Women's Health, the National Institute on Minority Health and Health Disparities, the Centers for Disease Control and Prevention, and the American Diabetes Association.

Bristol-Myers Squibb and Parke-Davis provided additional funding and material support during the DPP. Lipha (Merck-Sante) provided medication, and LifeScan Inc. donated materials during the DPP and DPPOS. No other potential conflicts of interest relevant to this article were reported.

D.W.P. researched data, contributed to discussion, wrote the manuscript, and edited the manuscript. Y.M. researched data, contributed to discussion, wrote the manuscript, and edited the manuscript. R.R.R. and L.P. contributed to discussion and edited the manuscript. G.A.B., D.M., and W.C.K. researched data, contributed to the discussion, and reviewed and edited the manuscript. E.B.-C. wrote the manuscript. D.Y.L. contributed to discussion and edited the manuscript. D.W.P. is the guarantor of this work and, as such, had full access to all the data in the study and takes responsibility for the integrity of the data and the accuracy of the data analysis.

The research group gratefully acknowledges the commitment and dedication of the participants of the DPP and DPPOS. The writing group thanks Nicole Butler, George Washington University Biostatistics Center, for her assistance with manuscript preparation. A complete list of centers, investigators, and staff can be found in the Supplementary Data online.

## References

1. Strine TW, Mokdad AH, Dube SR, et al. The association of depression and anxiety with obesity and unhealthy behaviors among community-dwelling US adults. *Gen Hosp Psychiatry* 2008;30:127–137
2. Simon GE, Ludman EJ, Linde JA, et al. Association between obesity and depression in middle-aged women. *Gen Hosp Psychiatry* 2008;30:32–39
3. Everson SA, Maty SC, Lynch JW, Kaplan GA. Epidemiologic evidence for the relation between socioeconomic status and depression, obesity, and diabetes. *J Psychosom Res* 2002;53:891–895
4. Blazer DG, Moody-Ayers S, Craft-Morgan J, Burchett B. Depression in diabetes and obesity: racial/ethnic/gender issues in older adults. *J Psychosom Res* 2002;53:913–916
5. Mezuk B, Eaton WW, Albrecht S, Golden SH. Depression and type 2 diabetes over the lifespan: a meta-analysis. *Diabetes Care* 2008;31:2383–2390
6. Knol MJ, Twisk JWR, Beekman ATF, Heine RJ, Snoek FJ, Pouwer F. Depression as a risk factor for the onset of type 2 diabetes mellitus. A meta-analysis. *Diabetologia* 2006;49:837–845
7. Rubin RR, Ma Y, Marrero DG, et al.; Diabetes Prevention Program Research Group. Elevated depression symptoms, antidepressant medicine use, and risk of developing diabetes during the diabetes prevention program. *Diabetes Care* 2008;31:420–426
8. Kivimäki M, Tabák AG, Lawlor DA, et al. Antidepressant use before and after the diagnosis of type 2 diabetes: a longitudinal modeling study. *Diabetes Care* 2010;33:1471–1476
9. Rubin RR, Ma Y, Peyrot M, et al.; Diabetes Prevention Program Research Group. Antidepressant medicine use and risk of developing diabetes during the diabetes prevention program and diabetes prevention program outcomes study. *Diabetes Care* 2010;33:2549–2551
10. Rubin RR, Gaussoin SA, Peyrot M, et al. Knowler WC for the Look AHEAD Research Group. Cardiovascular disease risk factors, depression symptoms and antidepressant medicine use in the Look AHEAD (Action for Health in Diabetes) clinical trial of weight loss in diabetes. *Diabetologia* 2010;55:1581–1589
11. Lin EH, Katon W, Von Korff M, et al. Relationship of depression and diabetes self-care, medication adherence, and preventive care. *Diabetes Care* 2004;27:2154–2160
12. Ciechanowski PS, Katon WJ, Russo JE, Hirsch IB. The relationship of depressive symptoms to symptom reporting, self-care and glucose control in diabetes. *Gen Hosp Psychiatry* 2003;25:246–252
13. Knowler WC, Barrett-Connor E, Fowler SE, et al.; Diabetes Prevention Program Research Group. Reduction in the incidence of type 2 diabetes with lifestyle intervention or metformin. *N Engl J Med* 2002;346:393–403
14. Tuomilehto J, Lindström J, Eriksson JG, et al.; Finnish Diabetes Prevention Study Group. Prevention of type 2 diabetes mellitus by changes in lifestyle among subjects with impaired glucose tolerance. *N Engl J Med* 2001;344:1343–1350
15. Delahanty LM, Conroy MB, Nathan DM; Diabetes Prevention Program Research Group. Psychological predictors of physical activity in the diabetes prevention program. *J Am Diet Assoc* 2006;106:698–705
16. Wing RR, Hamman RF, Bray GA, et al.; Diabetes Prevention Program Research Group. Achieving weight and activity goals among diabetes prevention program lifestyle participants. *Obes Res* 2004;12:1426–1434
17. The Diabetes Prevention Program Research Group. The Diabetes Prevention Program. Design and methods for a clinical trial in the prevention of type 2 diabetes. *Diabetes Care* 1999;22:623–634
18. Rubin RR, Fujimoto WY, Marrero DG, et al.; DPP Research Group. The Diabetes Prevention Program: recruitment methods and results. *Control Clin Trials* 2002;23:157–171
19. Beck AT, Steers RA. *Manual of the Beck Depression Inventory*. San Antonio, TX, Psychological Corp., 1993
20. Beck AT, Epstein N, Brown G, Steer RA. An inventory for measuring clinical anxiety: psychometric properties. *J Consult Clin Psychol* 1988;56:893–897
21. Gaynes BN, Rush AJ, Trivedi MH, Wisniewski SR, Balasubramani GK, Spencer DC. Major depression symptoms in primary care and psychiatric care settings: a cross-sectional analysis. *Ann Fam Med* 2007;5:126–134
22. Pratt LA, Brody DJ, Gu Q. Antidepressant use in persons aged 12 and over: United States, 2005–2008. NCHS data brief, no. 76. Hyattsville, MD, National Center for Health Statistics, 2011
23. Turk MW, Yang K, Hravnak M, Sereika SM, Ewing LJ, Burke LE. Randomized clinical trials of weight loss maintenance: a review. *J Cardiovasc Nurs* 2009;24:58–80
24. Knowler WC, Fowler SE, Hamman RF, et al.; Diabetes Prevention Program Research Group. 10-year follow-up of diabetes incidence and weight loss in the Diabetes Prevention Program Outcomes Study. *Lancet* 2009;374:1677–1686
25. Rubin RR, Knowler WC, Ma Y, et al.; Diabetes Prevention Program Research Group. Depression symptoms and antidepressant medicine use in Diabetes Prevention Program participants. *Diabetes Care* 2005;28:830–837
26. Gartlehner G, Hansen RA, Thieda P, et al. Comparative effectiveness of second-generation antidepressants in the pharmacologic treatment of adult depression. Comparative effectiveness rev. no. 7 [article online], 2007. Rockville, MD, Agency for Healthcare Research and Quality. Available from [www.effectivehealthcare.ahrq.gov/reports/final.cfm](http://www.effectivehealthcare.ahrq.gov/reports/final.cfm). Accessed on 27 December 2010
27. Thase ME. Recognition and diagnosis of atypical depression. *J Clin Psychiatry* 2007;68(Suppl. 8):11–16