

Errata

Lee S, Gungor N, Bacha F, Arslanian S: Insulin resistance: link to the components of the metabolic syndrome and biomarkers of endothelial dysfunction in youth. *Diabetes Care* 30:2091–2097, 2007

Panels A and B of Fig. 4 in the above-listed article were not properly labeled. The correct figure appears below.

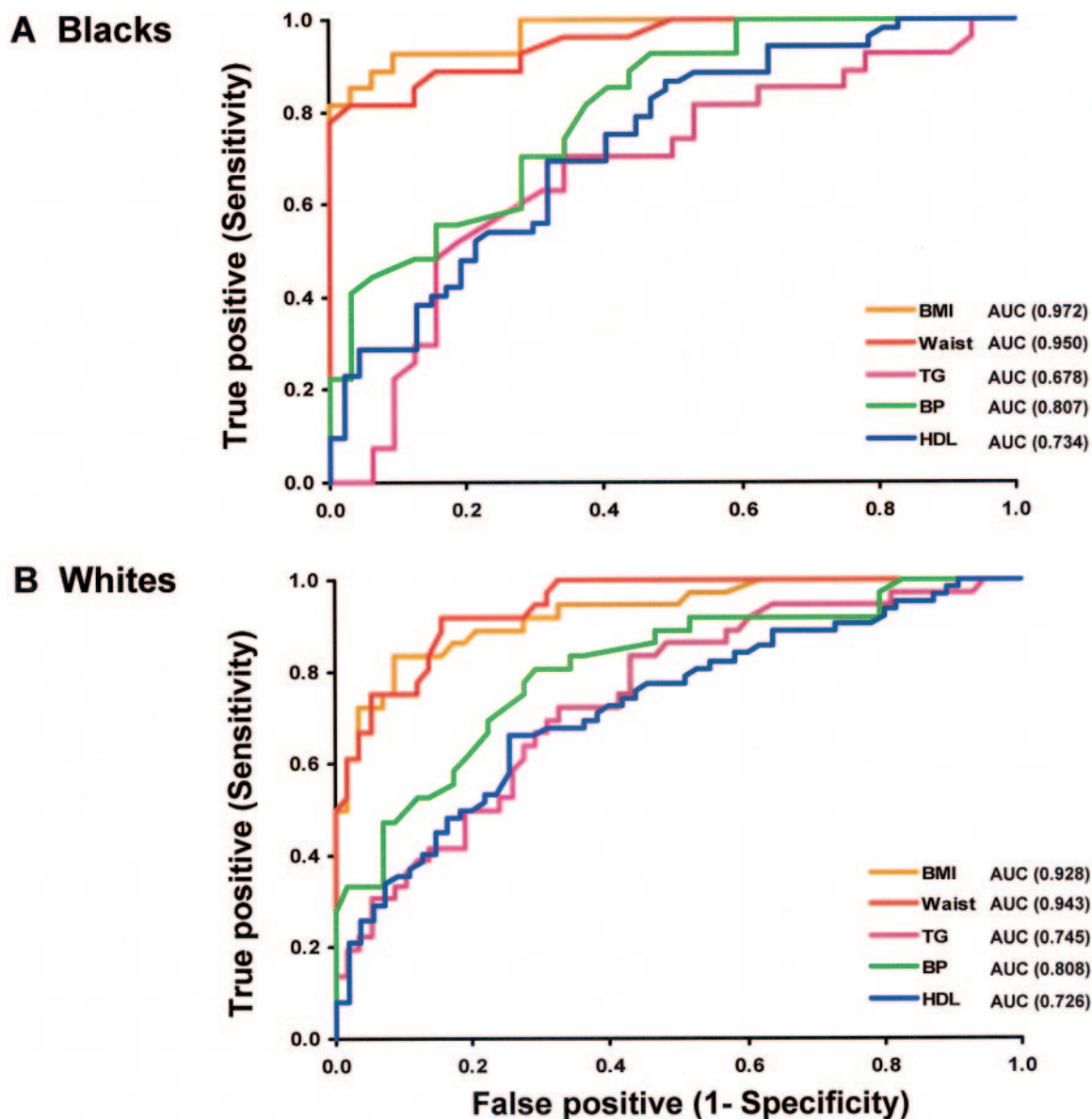


Figure 4—ROC curves of individual components of metabolic syndrome as markers of insulin resistance. Insulin resistance was defined based on cutoffs of insulin sensitivity (lower 10th percentile) derived from the non-overweight group (cutoffs, blacks: $4.6 \text{ mg} \cdot \text{kg}^{-1} \cdot \text{min}^{-1} \text{ per } \mu\text{U/ml}$; whites: $4.4 \text{ mg} \cdot \text{kg}^{-1} \cdot \text{min}^{-1} \text{ per } \mu\text{U/ml}$). AUC, area under the curve; TG, triglycerides.